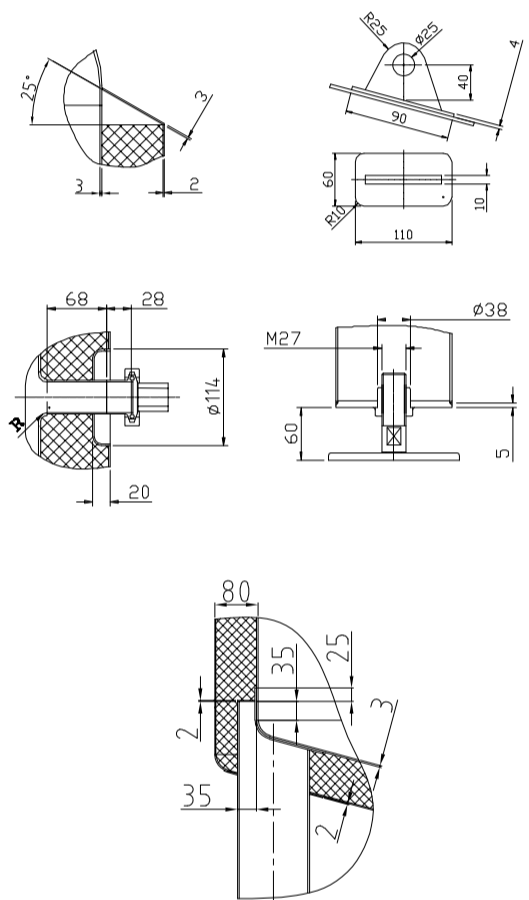


Design data

| | | |
|--------------------------|----------------------------|---------|
| Vessel category | Normal pressure | |
| Description of parameter | Vessel | Jacket |
| Working pressure | psi | ATMP |
| Design pressure | psi | ATMP |
| Level testing pressure | psi | ATMP |
| Medium | Malt | Glycol |
| Material | SUS 304 | SUS 304 |
| Working temperature | °F 15 to 250 | |
| Design temperature | °F 15 to 250 | |
| Gross volume | BBL | 20 |
| Net volume | BBL | 15 |
| Heat exchanger area | m ² | 4.6 |
| Glycol Jacket Max Volume | Gallon | 6.4 |
| Insulation material | Chloride Free Polyurethane | |
| Insulation thickness | mm | 80 |
| Total Tank Weight Empty | lbs | 1165 |
| Total Tank Weight Full | lbs | 5045 |



CONNECTIONS

| MARK | DN | DESCRIPTION | CONNECT SIZE | REMARKS |
|------|--------|------------------|--------------|---------|
| A | ø15.7" | Manway | ø15.7" | ISO |
| B | 2" | Light | 2" | ISO |
| C | 1.5" | CIP APM FERRULE | 1.5" | ISO |
| D | 1.5" | TEMPERATURE CONN | 1.5" | NPT |
| E | 8" | EXHAUST CAP | 8" | ISO |
| G | 1.5" | LEVEL GAGE | 1.5" | ISO |
| H | 1.5" | INLET | 1.5" | ISO |
| I | 1.5" | OUTLET | 1.5" | ISO |
| J | 2" | OUTLET | 2" | ISO |
| M | 3/4" | Steam Inlet | 3/4" | NPT |
| O | 3/4" | Steam Outlet | 3/4" | NPT |
| | | | | |
| | | | | |
| | | | | |



11/12/2022

15BBL KETTLE
[STEAM]