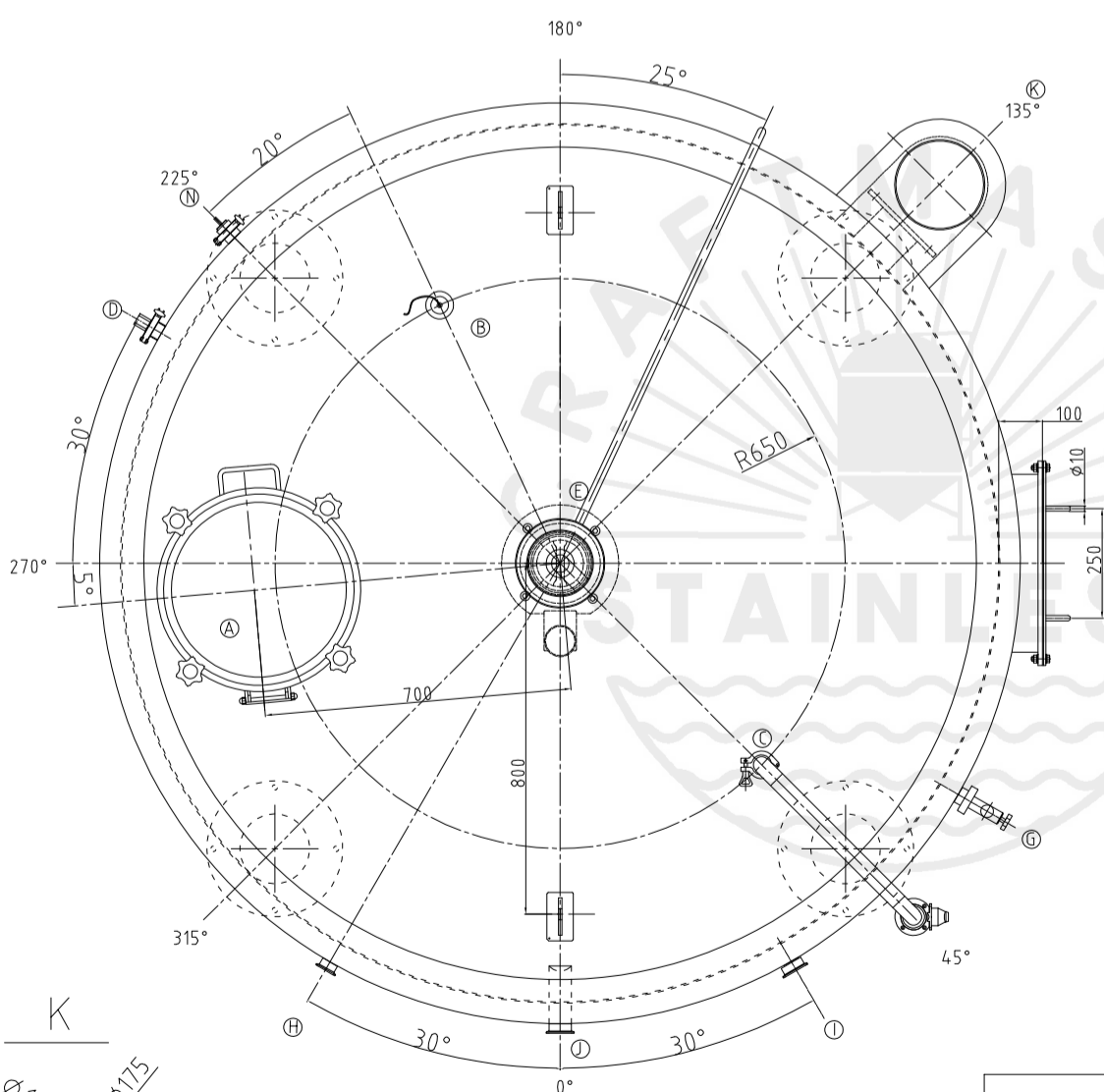
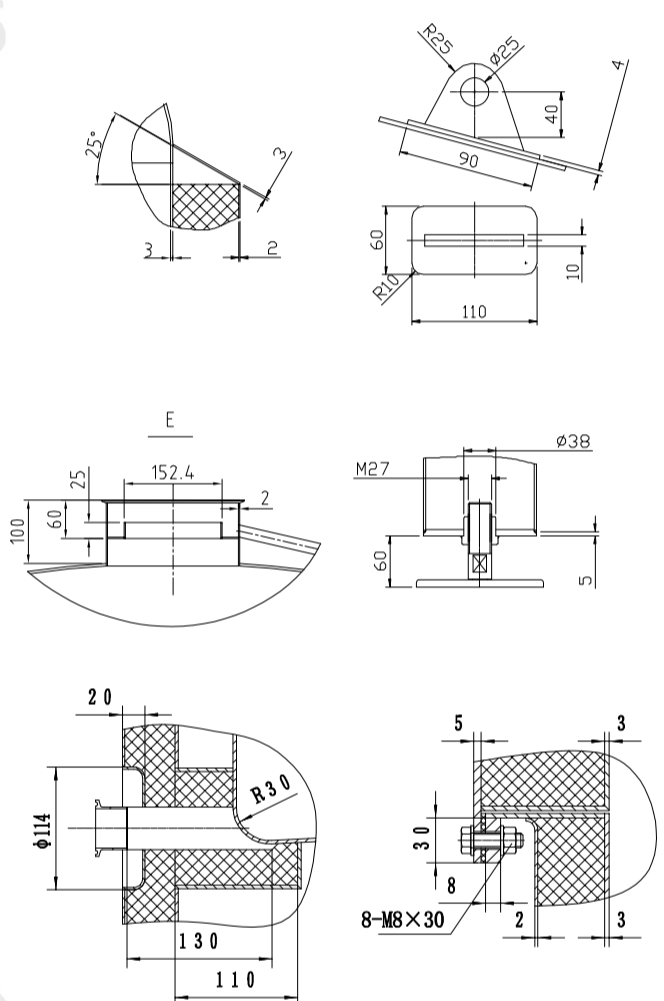
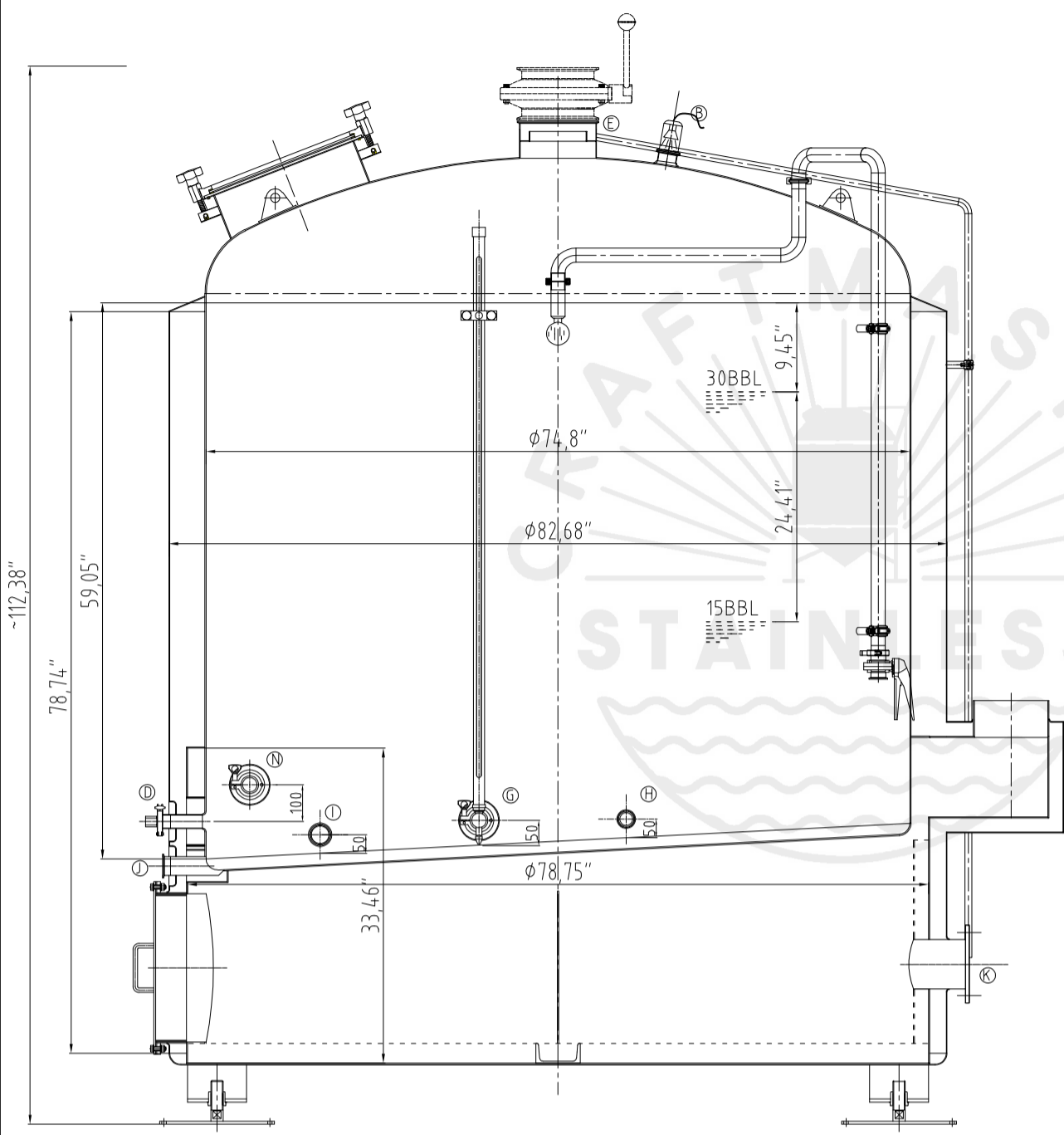
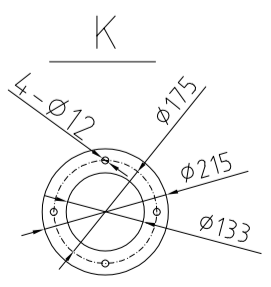


| Design data | |
|--------------------------|-----------------|
| Vessel category | Normal pressure |
| Description of parameter | Vessel |
| Working pressure | psi ATMP |
| Design pressure | psi ATMP |
| Level testing pressure | psi ATMP |
| Medium | Malt |
| Material | SUS 304 |
| Working temperature | °F 15 to 250 |
| Design temperature | °F 15 to 250 |
| Gross volume | BBL 42.1 |
| Net volume | BBL 30 |
| Heat exchanger area | m2 ----- |
| Glycol Jacket Max Volume | Gallon ----- |
| Insulation material | Rock wool |
| Insulation thickness | mm 100 |
| Total Tank Weight Empty | lbs 2820 |
| Total Tank Weight Full | lbs 10575 |



| CONNECTIONS | | | | |
|-------------|--------|-------------------------|--------------|---------|
| MARK | DN | DESCRIPTION | CONNECT SIZE | REMARKS |
| A | φ15.7" | Manway | φ15.7" | ISO |
| B | DN80 | Light | DN80 | ISO |
| C | 1.5" | CIP APM FERRULE | 1.5" | ISO |
| D | 1.5" | TEMPERATURE CONN | 1.5" | NPT |
| E | 8" | EXHAUST CAP | 8" | ISO |
| G | 1.5" | LEVEL GAGE | 1.5" | ISO |
| H | 1.5" | INLET | 1.5" | ISO |
| I | 2" | OUTLET | 2" | ISO |
| J | 2" | OUTLET | 2" | ISO |
| K | φ5.2" | Burner flange | φ5.2" | ISO |
| N | 1.5" | Anti Dry Burning Sensor | 1.5" | ISO |
| | | | | |
| | | | | |



11/16/2022

30BBL KETTLE
[DIRECT FIRE]