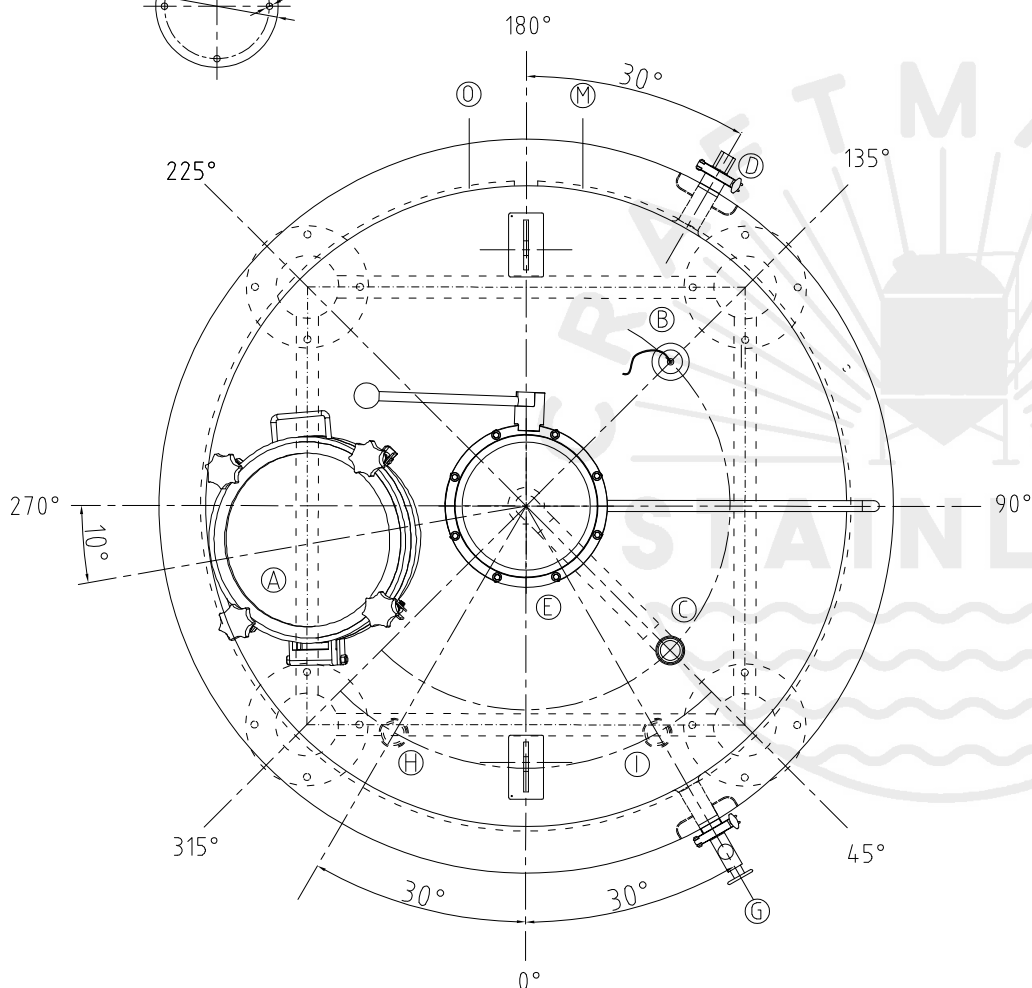
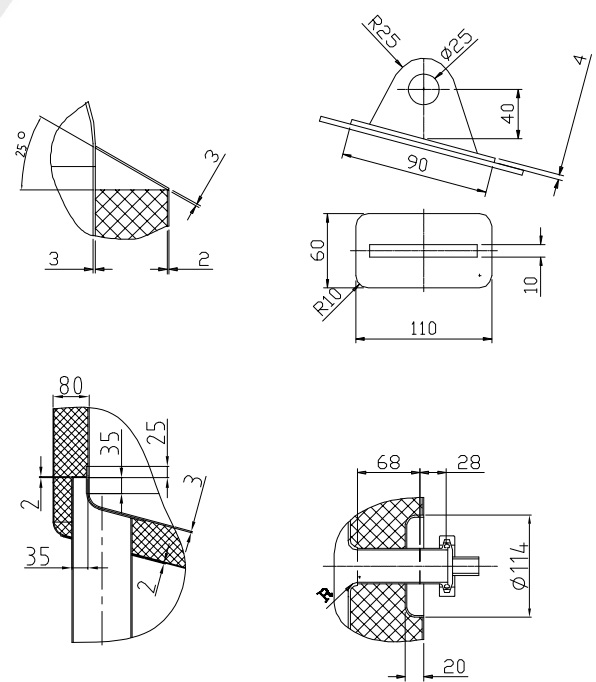
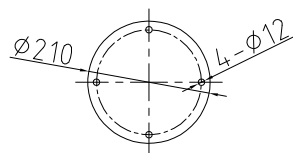
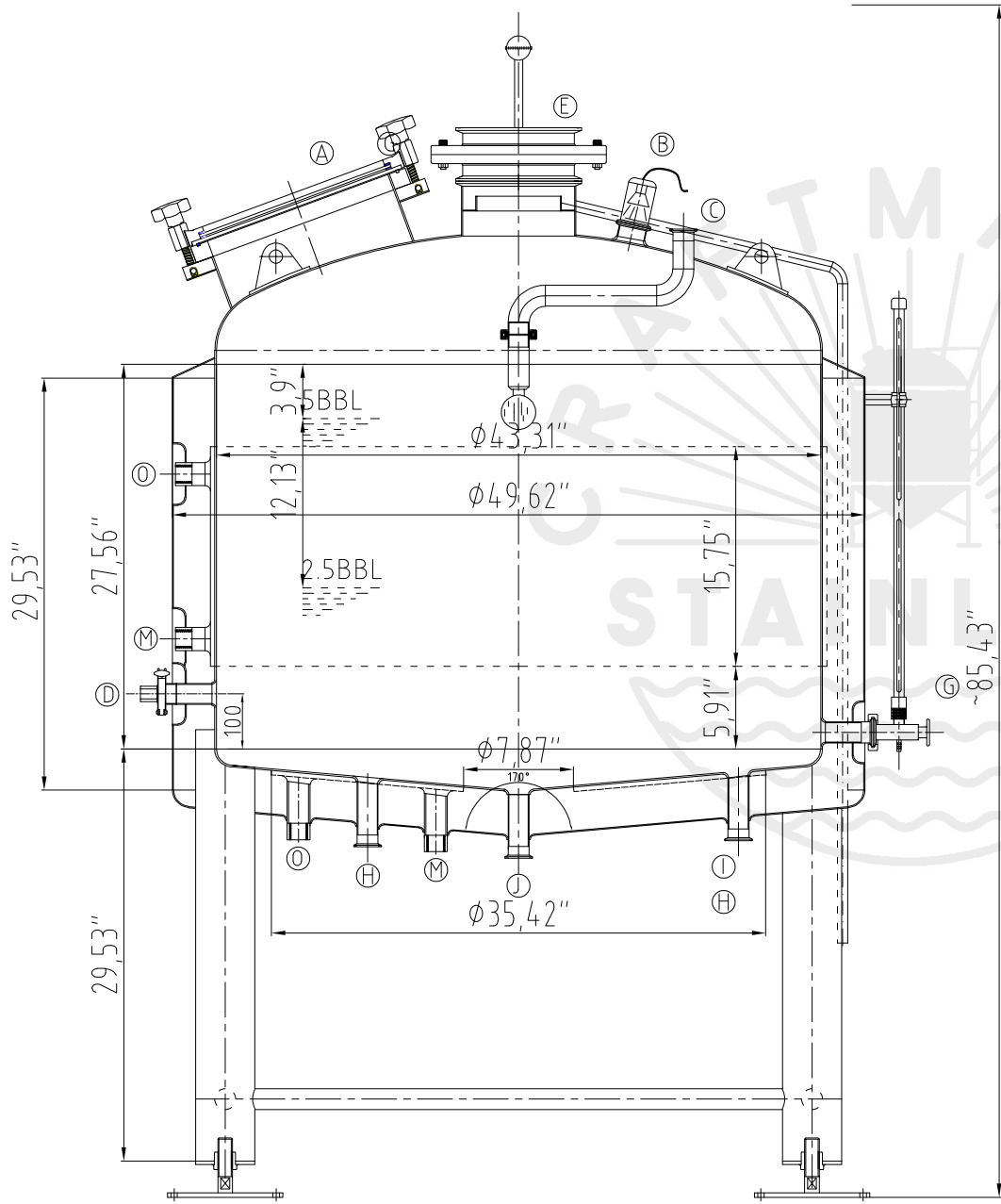


Design data

Vessel category	Normal pressure	
Description of parameter	Vessel	Jacket
Working pressure	psi	ATMP
Design pressure	psi	ATMP
Level testing pressure	psi	ATMP
Medium	Malt	Glycol
Material	SUS 304	SUS 304
Working temperature	°F 15 to 250	
Design temperature	°F 15 to 250	
Gross volume	BBL	7
Net volume	BBL	5
Heat exchanger area	m ²	1.9
Glycol Jacket Max Volume	Gallon	2.5
Insulation material	Chloride Free Polyurethane	
Insulation thickness	mm	80
Total Tank Weight Empty	lbs	640
Total Tank Weight Full	lbs	1935



CONNECTIONS

MARK	DN	DESCRIPTION	CONNECT SIZE	REMARKS
A	Ø14"	Manway	Ø14"	ISO
B	2"	Light	2"	ISO
C	1.5"	CIP APM FERRULE	1.5"	ISO
D	1.5"	TEMPERATURE CONN	1.5"	NPT
E	8"	EXHAUST CAP	8"	ISO
G	1.5"	LEVEL GAGE	1.5"	ISO
H	1.5"	INLET	1.5"	ISO
I	1.5"	OUTLET	1.5"	ISO
J	1.5"	OUTLET	1.5"	ISO
M	3/4"	Steam Inlet	3/4"	NPT
O	3/4"	Steam Outlet	3/4"	NPT



11/12/2022

5BBL KETTLE
[STEAM]